



Pinch Valve Replacement Sleeves

Fuller Valve manufactures a comprehensive range of pinch valve sleeves for abrasive, corrosive, and viscous fluids such as slurries, cement, ash, pulp stock, waste water, chemicals, and pellets.

We apply our heavy duty sleeve technology in manufacturing superior quality replacement sleeves that often outperform the original pinch valve sleeve.

Fuller Valve manufactures replacement sleeves to fit the following brands of valve.

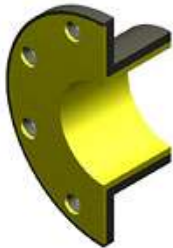
Red Valve, RKL Controls, Flexible Valve Corp., ONYX Valve, Elasto-Valve, Larox, Jaco/Linatex and more.

Pinch Valve replacement sleeves are available with several types of end connection and port configurations.



End Connections Available

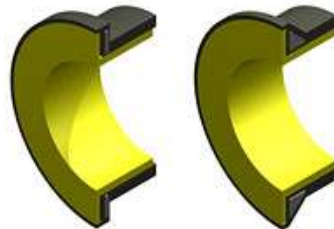
Flanged



Slip-On

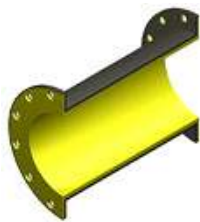


Bead End

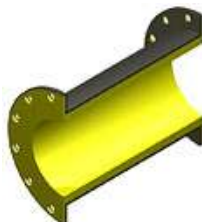


Sleeve Types Available

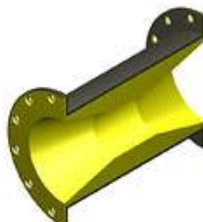
Standard Full Port



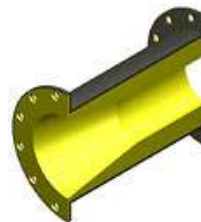
Double



Wall



Reduced Port



Positive opening tabs are available on sleeves for mechanical pinch valves to assist opening of valves that are normally closed or in low pressure applications.

Elastomers Available

FullerValve

Pure Gum Natural Rubber (PGR) Best rubber for abrasive slurries and powders.

Styrene Butadiene Rubber (SBR) For abrasive applications with dry or jagged materials and pellets

Chloroprene Rubber / Neoprene (CR) For moderate chemicals, excellent weather resistance

Chlorobutyl Rubber (CIIR) For general purpose use, excellent for hot water (not oil resistant)

Buna-N / Nitrile (NBR) For most hydrocarbons, fats, oils, greases, tar, chemicals and solvents

Chlorosulfonated Rubber / Hypalon (CSM) For strong bases and acids, excellent ozone protection

Ethylene Propylene Rubber (EPDM) For organic fats, many chemicals, heat and radiation resistance

Fluorocarbon Rubber / Viton™₁ / Fluorel™₂ (FKM/FPM) For strong chemicals or high heat

1. Viton is a registered trademark of Dupont Performance Elastomers
2. Fluorel is manufactured by Dyneon LLC a unit of 3M

Food grade versions of most elastomers are available for applications in the food and pharmaceutical industries.

TFE / FEP lining is also available on some sleeve types

Contact Fuller Valve for your Pinch Valve Replacement Sleeve requirements

1-888-524-3777

A Northshore Developments Website

No duplication is permitted of this site graphically or conceptually unless requested and approved in writing.
All Rights Reserved Worldwide. **Copyright** © 2006 Fuller Valve and Northshore Developments.
For technical issues regarding this site please contact the site developers: **Northshore Developments**