

SERIES CVO SLIP-ON DUCKBILL CHECK VALVE

Manufactured with an integral reinforced flexible sleeve end complete with heavy duty clamps the Series CVO can be easily attached directly over the pipe end.

Available in standard sizes up to 96" we will also manufacture any valve size to meet your exact needs.

Attachment Sleeve and Clamping Rings

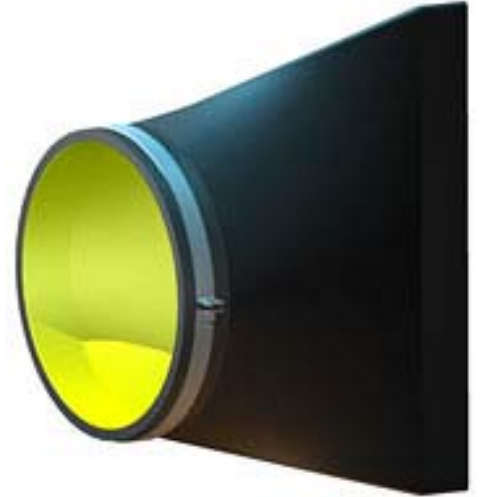
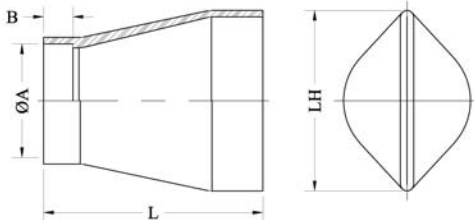
The end of the valve that attaches to the pipe is a flexible rubber sleeve with multiple plies of reinforcing cord. The inside diameter of this sleeve is sized to allow easy installation over the pipe end.

In addition to steel pipe the Series CVO can be easily adapted to plastic, concrete, special dimension conduits or channels and corrugated culverts.

Clamping rings are available in stainless steel only. Depending on the size and application these may be worm gear type, toggle bolt band type or rolled flat-bar with bolted joints. Larger valves with flat-bar clamps are provided with extra holes in the bar through which pins should be inserted through the pipe wall to help keep the valve in place.

Larger diameter valves are supplied with a lifting clevis to assist the installation of the valve. The same clevis can be used to support the valve and water weight when in use.

Design Specifications



Pipe Size A (in)	B (in)	Maximum Length - L (in)	Maximum Height - LH (in)	Pipe Size A (in)	B (in)	Maximum Length - L (in)	Maximum Height - LH (in)
2	2	6	4	24	8	40	39
2-1/2	2	8	5	26	8	42	42
3	3	9	6	28	8	44	45
4	3	12	8	30	10	48	47
5	3	14	9	32	10	48	52
6	4	16	11	36	10	58	56
8	4	17	14	42	12	60	68
10	4	20	17	48	12	66	77
12	5	24	22	54	12	72	86
14	5	28	24	60	12	82	97
16	5	30	27	66	14	90	99
18	6	32	30	72	14	98	114
20	8	34	32	84	18	108	135
22	8	36	36	96	18	114	150