

SERIES CVI – INSERTABLE DUCKBILL CHECKVALVE

Fuller Valve Series CVI In-Line Check Valves are designed to fit right inside the pipe. No valve body is required.

This feature not only saves money but also permits installation in otherwise difficult situations such as tank outlets, floor drains, sewer interceptors, overflow systems, retention basins and manhole outlets.



Series CVI-E fits directly inside the pipe and is secured in place by a stainless steel expandable clamp ring.

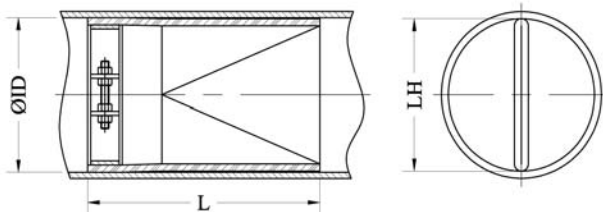
Series CVI-F also fits directly inside the pipe and is bolted in place between the pipe flanges.



Note: Series CVI valves have increased pressure drop because the valve must be smaller to fit inside the pipe. Actual maximum flow area is less than 25% of nominal pipe area.

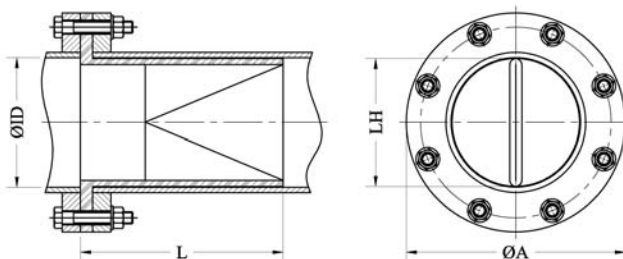
Design Specifications

Series CVI-E



PIPE - ID (in)	Maximum Length - L (in)	LH (in)	PIPE - ID (in)	Maximum Length - L (in)	LH (in)
2	6	1 7/8	16	23	14 3/4
2 1/2	7	2 3/8	18	25	16 3/4
3	8	2 7/8	20	32	18 3/4
4	12	3 7/8	24	34	22 3/4
5	14	4 7/8	30	42	28 3/4
6	15	5 7/8	36	46	34 3/4
8	17	7 7/8	42	50	40 3/4
10	20	9 7/8	48	60	46 1/2
12	21	11 7/8	54	66	54 1/2
14	22	12 3/4	60	70	58 1/2

Series CVI-F



PIPE - ID (in)	Maximum Length - L (in)	T	LH (in)	PIPE - ID (in)	Maximum Length - L (in)	T	LH (in)
2	6	1/2	1 7/8	16	23	1	14 3/4
2 1/2	7	1/2	2 3/8	18	25	1	16 3/4
3	8	1/2	2 7/8	20	32	1 1/4	18 3/4
4	12	3/4	3 7/8	24	34	1 3/8	22 3/4
5	14	3/4	4 7/8	30	42	1 3/8	28 3/4
6	15	3/4	5 7/8	36	46	1 1/2	34 3/4
8	17	3/4	7 7/8	42	50	1 1/2	40 3/4
10	20	3/4	9 7/8	48	60	1 1/2	46 1/2
12	21	1	11 7/8	54	66	1 1/2	54 1/2
14	22	1	12 3/4	60	70	1 1/2	58 1/2