

## **SERIES CVF – FLANGED DUCKBILL CHECKVALVE**

Manufactured with an integral reinforced rubber flange complete with metal backing rings the Series CVF can be bolted directly to a headwall, tank wall or pipe flange.

Available in standard sizes up to 96" we will also manufacture any valve size to meet your exact needs.

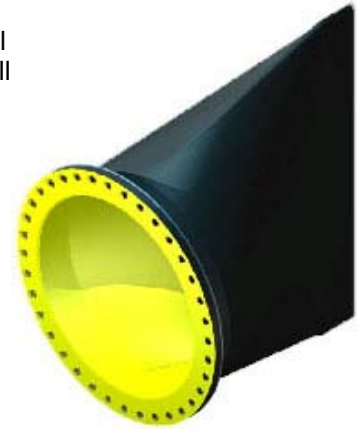
### **Flanges and Backing Rings**

Flat faced, reinforced rubber flanges with metal backing rings are drilled in accordance with customer specifications.

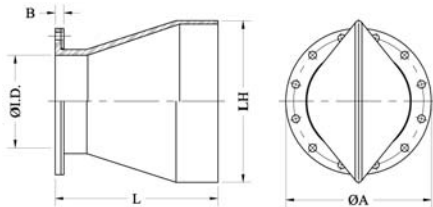
In addition to piping industry standards, unique dimensions and shapes of flanges are also available.

Flange backing rings are available in galvanized steel or painted steel and stainless steels depending on the application. Fuller Valve recommends stainless steel backing rings.

Larger diameter valves are supplied with a lifting clevis to assist the installation of the valve. The same clevis can be used to support the valve and water weight in service.



### **Design Specifications**



Pipe Size ID (in)	B (in)	Maximum Length - L (in)	Maximum Height - LH (in)	Pipe Size ID (in)	B (in)	Maximum Length - L (in)	Maximum Height - LH (in)
2	3/4	6	4	24	1 5/8	40	39
2 1/2	3/4	7	5	26	1 5/8	42	42
3	1 1/8	9	6	28	1 5/8	42	45
4	1 1/8	12	8	30	1 5/8	44	47
5	1 1/8	15	9	32	1 5/8	52	52
6	1 1/8	15	11	36	2	50	56
8	1 3/8	16	14	42	2 1/2	54	68
10	1 3/8	21	17	48	2 1/2	60	77
12	1 3/8	26	22	54	2 1/2	70	86
14	1 3/8	26	24	60	2 1/2	72	97
16	1 3/8	31	27	66	2 1/2	76	99
18	1 5/8	30	30	72	2 1/2	94	114
20	1 5/8	32	32	84	2 1/2	96	135
22	1 5/8	35	36	96	2 1/2	100	150